



Connecting with Communities

Shannon Pelkey

Graduate Intern | ACFT

Research Project Fall 2020

Why?

Our mission is to preserve, protect, and plant trees in the Greater Wilmington area to enhance the quality of life for present and future generations.

Often-negative feelings towards trees
Lower UTC --> lower income neighborhoods,
predominately people of color

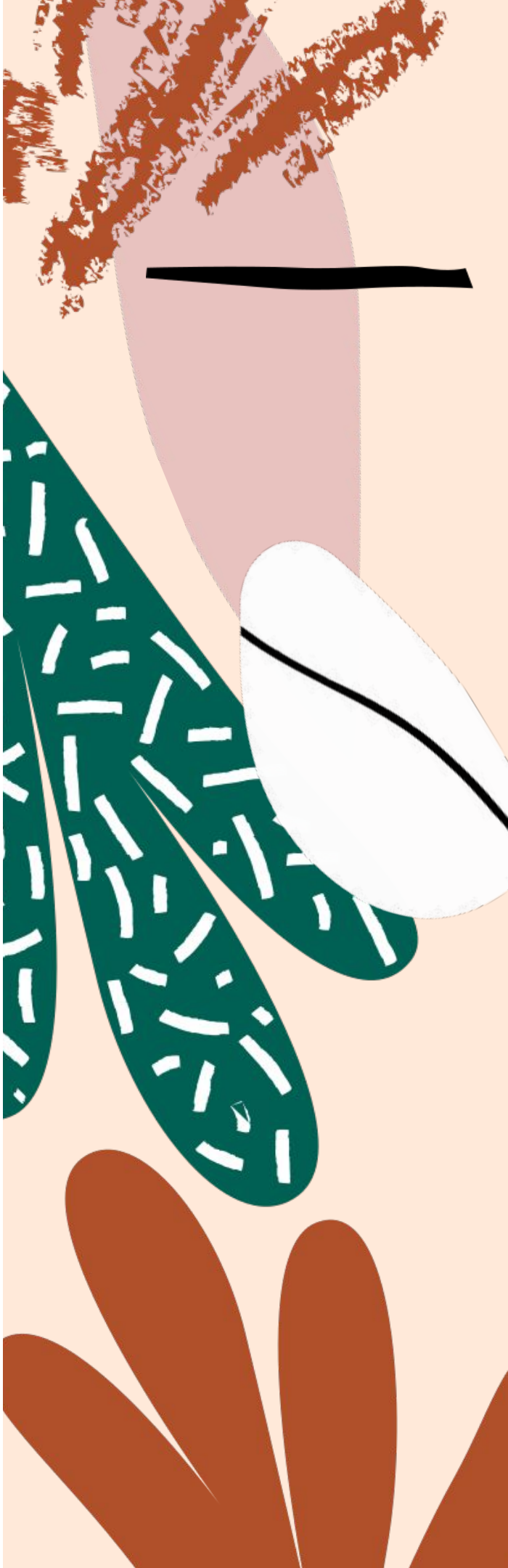
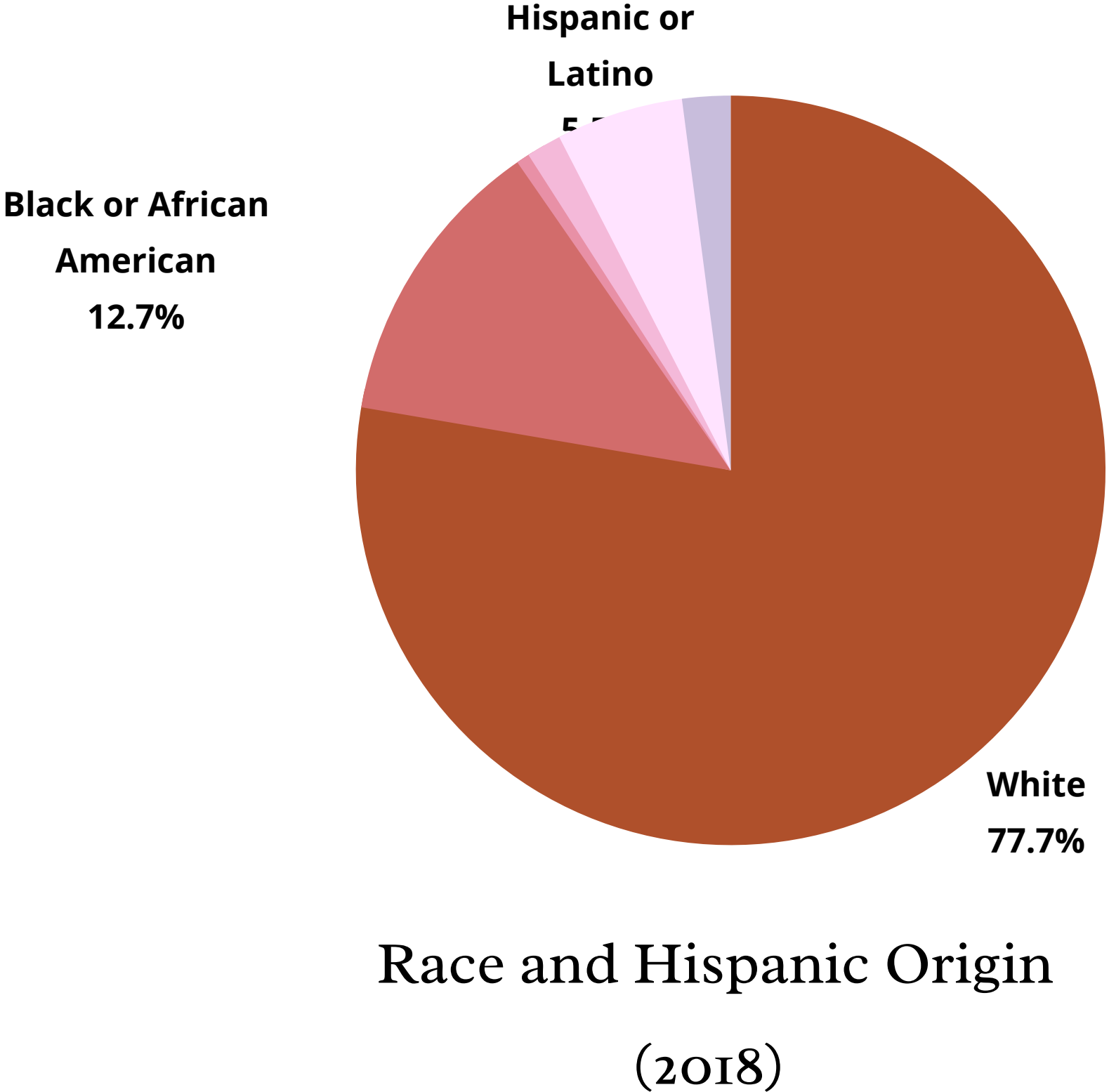
What does Wilmington look like?

15.3 %

Poverty Percentage (2018)

42.8 %

Non-owner Occupied
Housing Unit Rate (2018)





Environmental Gentrification

"builds on the material and discursive successes of the urban environmental justice movement and appropriates them to serve high-end redevelopment that displaces low income residents"

Three C's

Cost | Care | Crime

15.3 %

Poverty Percentage (2018)

42.8 %

Non-owner Occupied
Housing Unit Rate (2018)



1, 3, 4, 7, 8, 10





Community Connection

Interviews

- Thoughtful Communication
- Connections through Leaders
- Relationship Building



Recommendations

Collaborate with Community Partners

Changing our Message

Volunteer Training

Collaborate

Expand our Network



NC Environmental Justice Network, NAACP Environmental Justice
Committee, Wilmington Housing Authority, UNCW/CFCC


Changing our Message



**Different neighborhood,
Different approach**

Training



The image features a central white rectangular area containing the text "Closing Thoughts". This central area is framed by abstract, colorful patterns. The top border includes a black and white patterned shape on the left, a solid black horizontal line, a dark green shape, and a black shape with a white curved line. The bottom border includes a dark green shape, a brown shape with a white curved line, a black and white patterned shape, and a brown shape with a white dotted pattern.

Closing Thoughts

The image features a vibrant, abstract background with various geometric and organic shapes in shades of orange, pink, green, and black. The top section has a light orange background with a black and white patterned shape on the left, a black horizontal line in the center, and a large black shape on the right. The bottom section has a similar color palette with a green shape on the left, a black and white patterned shape in the center, and a black shape with white dots on the right.

Thank you!

Connie Parker, Bill Jayne, Stefanie Norris
Community Connections Interviewees



Questions? Comments?

pelkeynikki1@gmail.com



Works Cited

- Bogar, S., Beyer, K. M. (2015). Green Space, violence, and crime: A systematic review. *Trauma, Violence, & Abuse*, 17, 160-171. doi:10.1177/1524838015576412
- Checker, M. (2011). Wiped out by the “Greenwave”: Environmental gentrification and the paradoxical politics of urban sustainability. *City & Society*, 23, 210-229.
- Donovan, G. H. & Prestemon, J. P. (2012). The effect of trees on crime in Portland, Oregon. *Environment and Behavior*, 44 (1), 3-30.
- Heynen, N., Perkins, H. A., & Roy, P. (2006). The political ecology of uneven urban green space: The impact of political economy on race and ethnicity in producing environmental inequality in Milwaukee. *Urban Affairs Review*, 42 (1), 3-25
- Johnson, B. J., & Haleboua, G. R. (2015). Can social media save a neighborhood organization? *Planning, Practice & Research*, 30(3), 248-269. doi:10.1080/02697459.2015.1051319
- Johnson, B. J., & Haleboua, G. R. (2015). Can social media save a neighborhood organization? *Planning, Practice & Research*, 30(3), 248-269. doi:10.1080/02697459.2015.1051319
- Ketcham, C. W. (2015). Influence of Tree Planting Program Characteristics on Environmental Justice Outcomes (Unpublished master's thesis) Virginia Polytechnic Institute and State University

Works Cited cont.

9. Lopez, R. R., Lopez, A., Wilkins, R. N., Torres, C. C., Valdez, R., Teer, J. G., & Bowser, G. (2005). Changing hispanic demographics: Challenges in natural resource management. *Wildlife Society Bulletin*, 33(2), 553-564. doi:10.2193/0091-7648(2005)33[553:CHDCIN]2.0.CO;2
10. Maxwell, D., Corpening, T., & Daniels, A. (2020, September). ACFT Community Connection Interviews [Online interview].
11. Pincetl, S., & Pincetl, S. (2010). Implementing municipal tree planting: Los angeles million-tree initiative. *Environmental Management*, 45(2), 227-238. doi:10.1007/s00267-009-9412-7
12. Schwarz, K., Fragkias, M., Boone, C. G., Zhou, W., McHale, M., Grove, J. M., . . . Cadenasso, M. L. (2015). Trees grow on money: Urban tree canopy cover and environmental justice. *PloS One*, 10(4), e0122051. doi:10.1371/journal.pone.0122051
13. U.S. Census Bureau. (2019). U.S. Census Bureau QuickFacts: New Hanover County, North Carolina. Retrieved August 24, 2020, from <https://www.census.gov/quickfacts/fact/table/newhanovercountynorthcarolina/PSTo45219>
14. Watkins, S. L., Mincey, S. K., Vogt, J., & Sweeney, S. P. (2017). Is planting equitable? an examination of the spatial distribution of nonprofit urban tree-planting programs by canopy cover, income, race,